

Collision Scene Photography

The primary concern at any collision scene is the safety of all parties involved. Always be aware of other traffic, spills and unstable vehicles. Do not interfere with the efforts of emergency personnel unless assistance is requested.

Before taking any photographs, be sure that you have received any required medical attention, are physically able and have been provided clearance to do so by the police service on scene.

What to do:

Be sure to take as many photographs as possible, capturing key aspects of the scene from multiple angles. Use the check list below as a guide of photographs you should try to collect, if it is safe to do so:

- The road or intersection from multiple angles

- The approach and departure perspectives of the drivers involved

- Any signs, traffic control devices or items obstructing the driver's view

- Skid marks, road surface, gouges

- Positions of vehicles

- Cargo damage or absence of damage

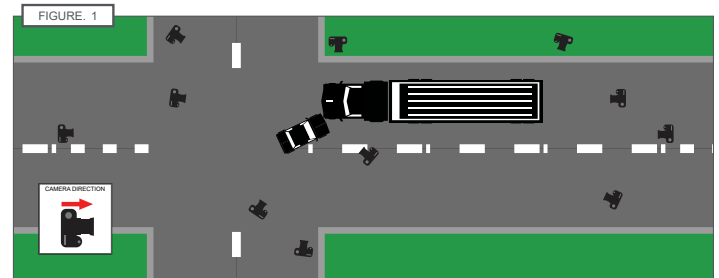
- Witness vehicles with license plates

- Vehicles from all four sides, license plates and detail of damage with scale (use log ruler, hand, etc.), as well as absence of damage on third party vehicles

- Vehicle interiors providing there are no people or anything deemed inappropriate (if possible, odometer, radar detectors, headsets, cans/bottles, cell phones, etc.)

- Any objects that may help to reference distance

Use pictures as references as you report what happened. Take photos of anything that may be important and want to remember later. Photos can jog your memory when needed months or even years later. Photos are a great tool to preserve details of the event and support your defense leading to faster settlements regardless of fault.



What not to do:

At a collision scene it is important to remember you should not take photos of injured or deceased people. These types of photos are not required and are considered inappropriate and disrespectful.

While Intact Public Entities Inc. does its best to provide useful general information and guidance on matters of interest to its clients, statutes, regulations and the common law continually change and evolve, vary from jurisdiction to jurisdiction, and are subject to differing interpretations and opinions. The information provided by Intact Public Entities Inc. is not intended to replace legal or other professional advice or services. The information provided by Intact Public Entities Inc. herein is provided "as is" and without any warranty, either express or implied, as to its fitness, quality, accuracy, applicability or timeliness. Before taking any action, consult an appropriate professional and satisfy yourself about the fitness, accuracy, applicability or timeliness of any information or opinions contained herein. Intact Public Entities Inc. assumes no liability whatsoever for any errors or omissions associated with the information provided herein and furthermore assumes no liability for any decision or action taken in reliance on the information contained in these materials or for any damages, losses, costs or expenses in a way connected to it. Intact Public Entities Inc. is operated by a wholly owned subsidiary of Intact Financial Corporation. Intact Design® and Risk Management Centre of Excellence® are registered trademarks of Intact Financial Corporation or its affiliates. All other trademarks are properties of their respective owners. TM & © 2022 Intact Public Entities Inc. and its affiliates. All Rights Reserved.